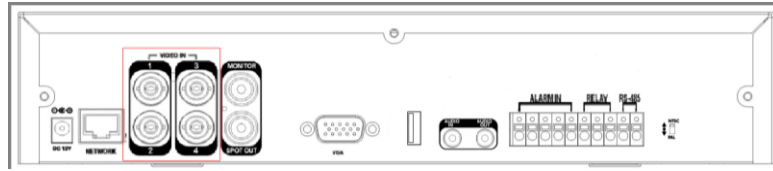


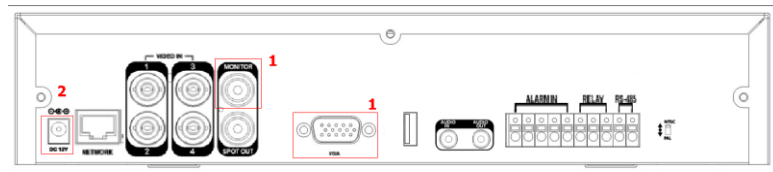
# Quick Guide

## 1. CONNECTION

1. Connect cameras to input ports (1 ~4ch )



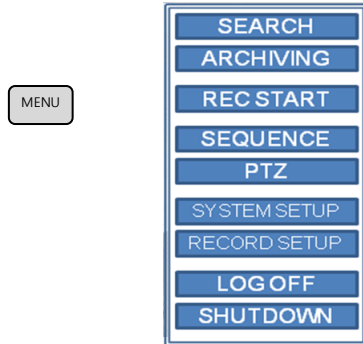
2. Connect VGA or Composite(1) and Power cable(2).



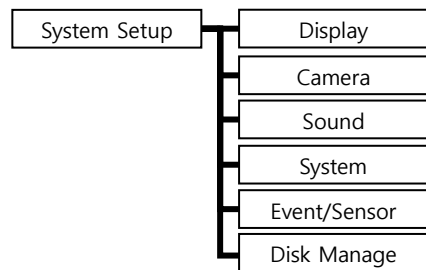
## 2. RECORDING SETUP

- ♣ Motion Recording setup.

1. Select the SYSTEM SETUP after the Mouse right button or Press Menu button on the front panel.

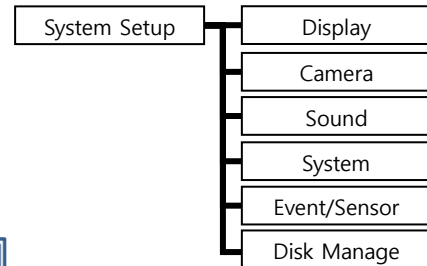


- 2.

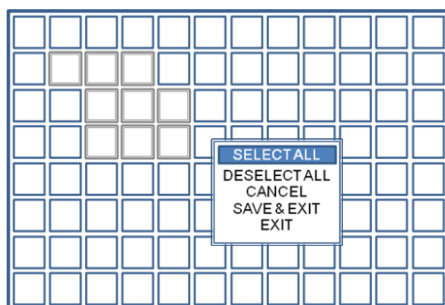


Select the CAMERA menu and MOTION SENSOR menu.

3. Select the SENSITIVITY of motion.



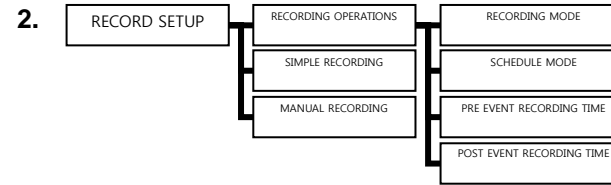
4. Select the Area SETUP.



Select the area by the mouse drag and save.

- ♣ Continuous Recording setup

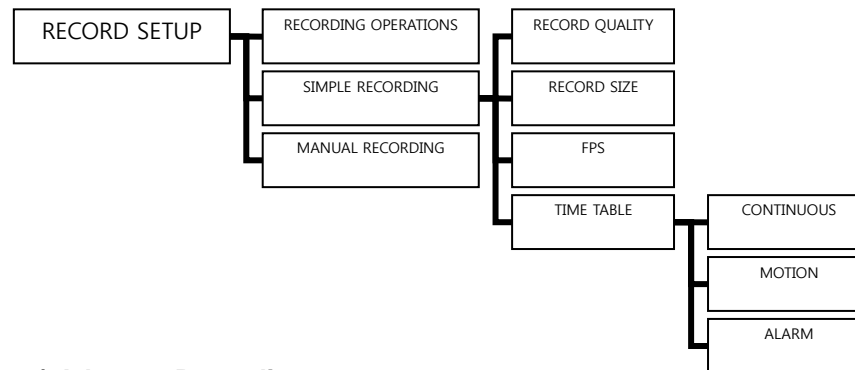
1. Select the RECORD MENU.----->



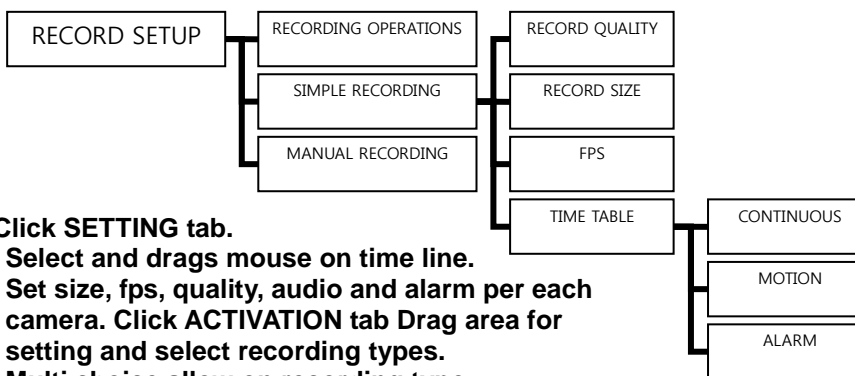
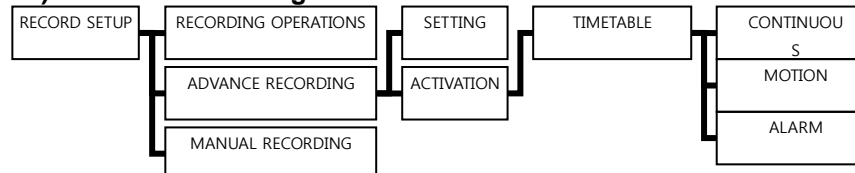
Select Recording Mode.

- 1 ) Simple Recording

Simple recording provides same recording configuration for all cameras.



- 2 ) Advance Recording

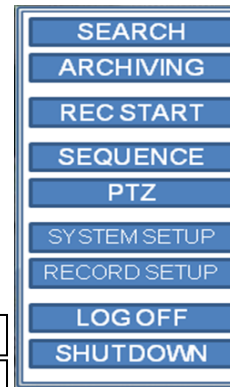


Click SETTING tab.

Select and drags mouse on time line. Set size, fps, quality, audio and alarm per each camera. Click ACTIVATION tab Drag area for setting and select recording types. Multi choice allow on recording type (CONTINUOUS, MOTION, ALARM).

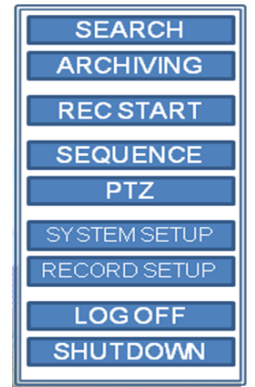
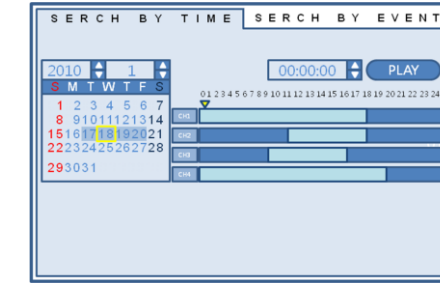
- 3 )Select Schedule Mode.

[DAILY: Same settings for everyday]  
[WEEKLY: Different settings each Day for week]



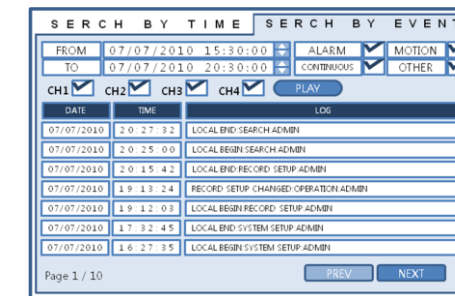
## 3. SEARCH

1. Select the SEARCH menu after clicking the mouse right button.



- ♣ TIME SEARCH [A]

Select a date. If there is a data, the date will be displayed with color. To select time, move the time bar by mouse drag and double click the mouse left button. Then move to the selected date and time.



- ♣ EVENT SEARCH [B]

Select the FROM (Start time) And TO (End time). select the Event (Alarm, Timer, Motion and ETC). Select the channels .

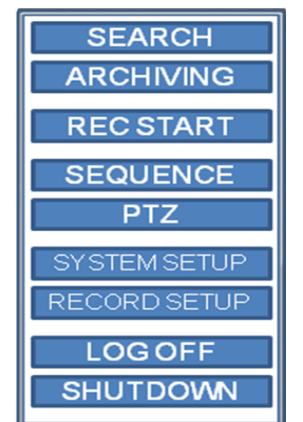
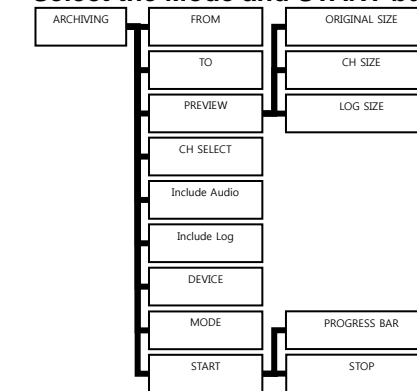
Press the START button.

Select the event and double click the mouse left button. Then move to the time with image.

## 4. ARCHIVE

1. Select the ARCHIVING menu after clicking the mouse right button.

Select the FROM (Start time) and to (End time). Select the camera channels Select the backup device. Select the Mode and START button.



- CAUTION

Do not insert any USB device during Archiving procedure.

# Quick Guide

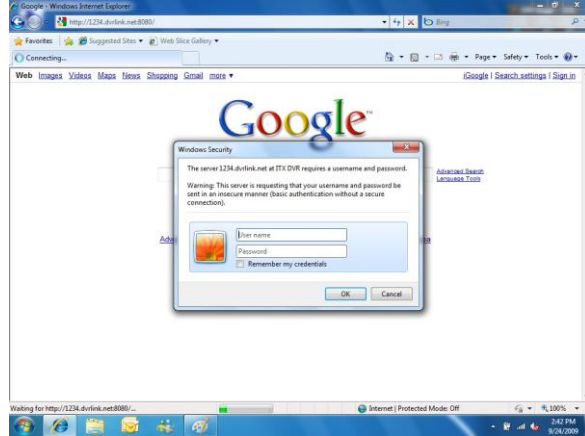
## 5. CLIENT SETUP

### 5-1.HOW TO CONNECT

Input the IP Address or URL of the DVR in the Internet Explorer  
If user uses the DDNS, input the URL as below.

<http://1234.dvrlink.net>

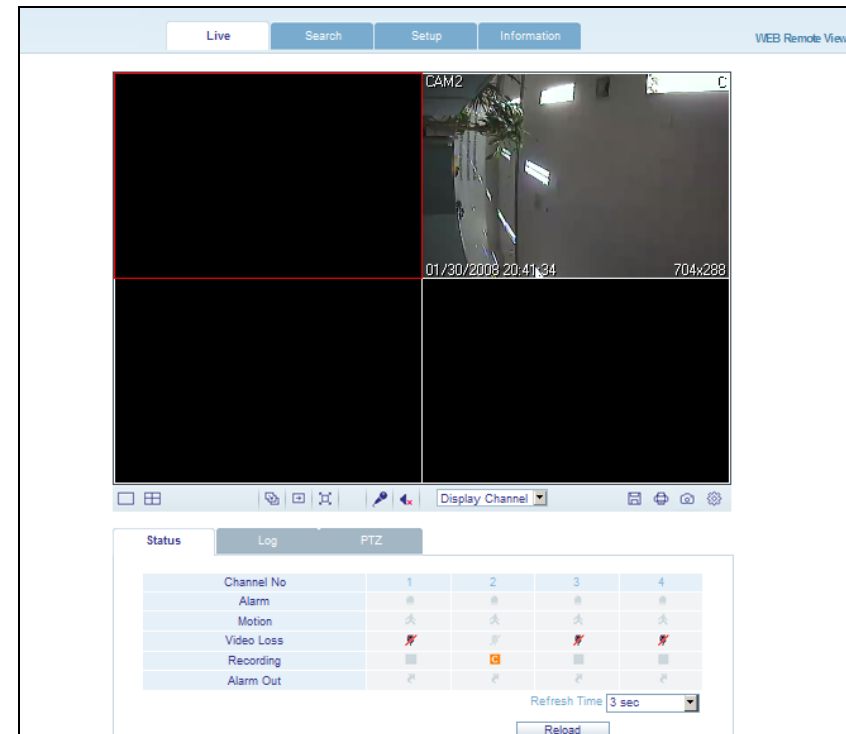
or <http://1234.dvrlink.net:XXXX> (XXXX is webport number)



Allow to install ActiveX,  
To install activeX on WindowVisa or higher version, User must have Administrator level of authority

WEB RA MINIMUM PC REQUIREMENT	
CPU	P4 3.0 or Higher
RAM	512MB or Higher
VGA	Geforce MS 400, Radeon 7500 or higher Gefore 8 series or higher
VGA MEMORY	64MB
MONITOR	1280X1024
OS	WINDOW XP2
IE VERSION	IE6.0 or higher
NETWORK	100Mbps
DIRECT X	V7.0 or higher

### 5-2.LIVE VIEW MODE



#### BUTTONS



Select one of the screen mode(1CH Full screen, 4CH view mode).



Move to next screen and make full screen



Select a channel.



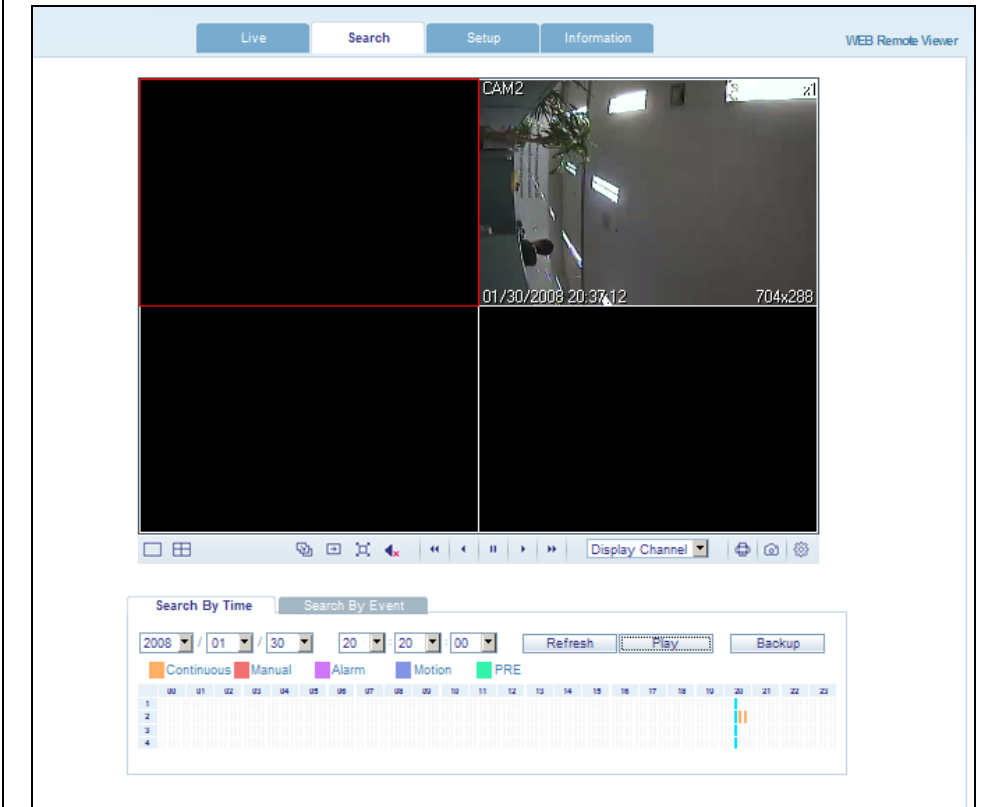
Save the live image.

Print the current screen.

Snapshot of the current screen.

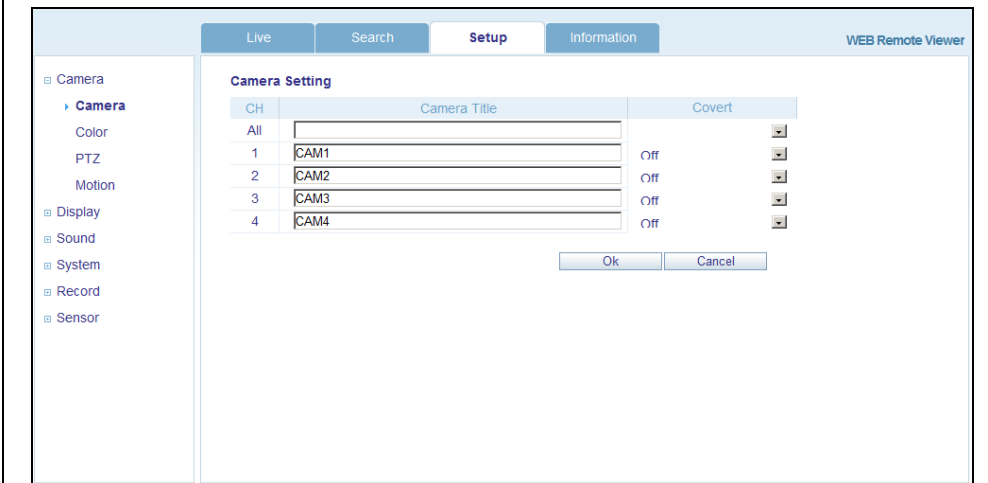
Setup for WEB Browser ([VGA Render] and [Save Folder])

### 5-3.SEARCH MODE



1. Refresh : Refresh the time line for recording data
2. Play : After select the date and time, user can play images.
3. Backup : User can backup a data as selected channel and time.

### 5-4. REMOTE SETUP FOR DVR



All setup details are same as system, refer the system manual for remote configuration.